

# Lighting

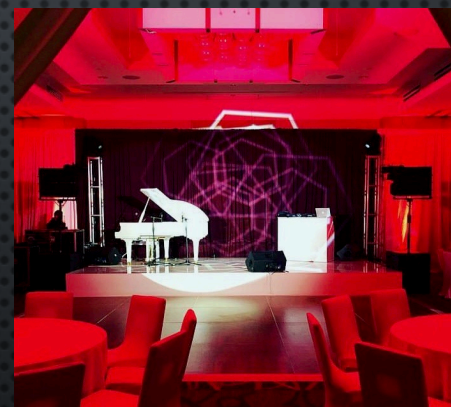
AT ADVANCED PRODUCTIONS WE BELIEVE THAT ANY SPACE CAN BE TRANSFORMED WITH GREAT LIGHTING. WE STRIVE TO FIND THE PROPER BALANCE OF ACCENT, AMBIENT, AND THEATRICAL LIGHTING TO MEET THE UNIQUE REQUIREMENTS OF YOUR EVENT.

one|source ...endless possibilities...



# LIGHTING DESIGNED TO ENHANCE YOUR EVENT

LIGHTING CAN BE USED TO ENHANCE THE NATURAL BEAUTY OF AN EVENT SPACE. THERE ARE A VARIETY OF WAYS TO LIGHT A SPACE, WHETHER THROUGH UP-LIGHTING, WASH, OR GOBOS.



one|source ...endless possibilities...



# WHAT TYPE OF LIGHTS DO I NEED?

AT ADVANCED PRODUCTIONS WE UTILIZE A VARIETY OF FIXTURES TO LIGHT YOUR EVENT. DEPENDING ON THE NATURE OF YOUR EVENT AND THE SPECIFIC REQUIREMENTS YOU MAY HAVE OUR EXPERIENCED DESIGN TEAM WILL SELECT THE PROPER FIXTURES TO MEET YOUR NEEDS AND BUDGET. WE OFFER A FULL ASSORTMENT OF MOVING HEAD FIXTURES, CONVENTIONAL LIGHTING INSTRUMENTS, AND BATTERY POWERED LED FIXTURES.



Moving Head Profile and wash Fixtures

**one|source** ...endless possibilities...



# OUR DESIGNERS CAN SELECT FROM A WIDE RANGE OF LIGHT FIXTURES OFFERING MANY OPTIONS TO ENHANCE YOUR EVENT...



SHARPY



MEGAPOINTE



SPIDER



VIPER PROFILE



MAVERICK MK1 SPOT



MAC AURA



ESPRITE



MAVERICK MK3 WASH



LED BEAM 150



ELLIPSOIDAL  
(LEKO)



SOURCE FOUR  
(PAR)



PIN SPOT



CUEPIX 16IP



COLORISE



QA5



SKYBOX



WELL FIT

one|source ...endless possibilities...



# WHAT IS AN UP-LIGHT?

AN UP-LIGHT IS A LIGHTING FIXTURE THAT IS PLACED ON THE FLOOR TO PROVIDE VERTICAL ILLUMINATION. AT ADVANCED PRODUCTIONS WE UTILIZE A WIDE VARIETY OF FIXTURES TO ACCOMPLISH UP-LIGHTING. THE PRIMARY DIFFERENCE IN THE LIGHTING FIXTURES IS THE SIZE AND POWER. WE ALSO OFFER COLOR CHANGING LED UP LIGHT FIXTURES, WHICH PROVIDE A VARIETY OF COLOR CHOICES, LOW POWER CONSUMPTION AND BATTERY OPERATION. THIS OPTION OFFERS A BIG RETURN ON INVESTMENT.



one|source ...endless possibilities...



# WHAT IS A PIN SPOT?

A PINSPOT IS A STAPLE IN THE LIGHTING BUSINESS. THIS SMALL FIXTURE PROVIDES A FOCUSED BEAM OF LIGHT THAT CAN BE USED TO ILLUMINATE FLORAL ARRANGEMENTS, WEDDING CAKES, ICE SCULPTURES AND TABLES. THEY COME IN A VARIETY OF TYPES AND COLORS. IN ADDITION TO TRADITIONAL PINSPOTS WE OFFER SWIVELIERS WHICH REPLACE EXISTING BALLROOM DOWNLIGHTS AND PROVIDE A FOCUSED BEAM OF LIGHT FROM ABOVE.



CAREFUL PLACEMENT AND FOCUS CAN ENHANCE THE LOOK OF YOUR EVENT SPACE.



BEAUTIFUL CENTER PIECES POP WHEN PIN SPOTS ARE USED.

one|source ...endless possibilities...



# WHAT IS A GOBO?

A GOBO IS A PIECE OF THIN METAL THAT HAS BEEN LASER CUT WITH A GRAPHIC DESIGN. ONCE THE GRAPHIC HAS BEEN CUT INTO THE METAL, IT IS PLACED INTO A SPECIAL LIGHTING FIXTURE. THESE CAN BE USED WITH CONVENTIONAL ELLIPSOIDAL FIXTURES OR INTELLIGENT SPOT FIXTURES. THIS LIGHTING INSTRUMENT CAN BE FOCUSED AND PROJECT THE IMAGE ONTO VIRTUALLY ANY SURFACE. THE IMAGE SIZE IS BASED ON THE SPECIFIC LENS ON THE LIGHT FIXTURE AND THE DISTANCE THE FIXTURE IS FROM THE PROJECTION SURFACE.



BRANDING



16<sup>TH</sup> BIRTHDAY



EVENT BRANDING



WEDDING RECEPTION

one|source ...endless possibilities...



# WHAT IS A TEXTURED WASH?

USING A GOBO WITH A PATTERN WE CAN CREATE A TEXTURED WASH ON THE CEILING OF A TENT, WALL OF A BUILDING, OR ACROSS THE TABLES AT A RECEPTION. THESE PATTERNS CAN BE VERY GRAPHIC OR SUBTLE BLURRED IMAGES MEANT TO ADD TO THE EVENTS' ATMOSPHERE. COLOR CAN ALSO BE ADDED TO THE FIXTURE TO FURTHER ENHANCE THE EFFECT.



SUBTLE TEXTURED WASH WITH GOBOS SLIGHTLY OUT OF FOCUS TO SOFTEN THE LOOK. THIS ALSO CREATES GREAT AMBIENT LIGHT IN THE SPACE.

LAYERING OF GOBO PATTERNS ON A LARGE WALL TO CREATE A TEXTURED WASH

one|source ...endless possibilities...



# WHERE WILL THE LIGHTING FIXTURES BE PLACED?

PLACEMENT OF THE LIGHTS IS A BIG PART OF THE LIGHTING DESIGN. IN THE DESIGN PHASE OUR TEAM WILL EVALUATE THE ARCHITECTURAL FEATURES OF YOUR EVENT SPACE, ALONG WITH THE AVAILABLE POWER SOURCES, AND DETERMINE THE PRIMARY OBJECTIVE OF THE LIGHTING FOR YOUR EVENT. AT ADVANCED PRODUCTIONS WE BELIEVE EVENT LIGHTING NEEDS TO BE FUNCTIONAL, AND ADD DECORATIVE VALUE, BUT NOT DIMINISH THE OVERALL AESTHETICS OF YOUR EVENT SPACE. OUR DESIGNERS WILL WORK TO DISCRETELY AND SAFELY PLACE THE LIGHTING FIXTURES AND CABLING. THE LIGHTING MAY BE BASED ON THE FLOOR, FLOWN FROM ABOVE, OR INTEGRATED INTO THE EXISTING ARCHITECTURE.



one|source ...endless possibilities...



# LIGHTING CONTROL

BEFORE YOU HAVE LIGHT, YOU MUST HAVE CONTROL. OUR DESIGNERS WILL ENSURE THE BEST POSSIBLE CONTROL ELEMENTS AND DIMMING EQUIPMENT IS IN PLACE TO GET THE MOST OUT OF THE FIXTURE PACKAGE THAT HAS BEEN SELECTED.

LIGHT BOARDS



DIMMING



one|source ...endless possibilities...



# POWER DISTRIBUTION

BEFORE YOU HAVE LIGHT, YOU MUST HAVE POWER. OUR DESIGN TEAM UNDERSTANDS POWER AND WILL ESTABLISH A POWER REQUIREMENT FOR EACH DESIGN ELEMENT. ONCE A COMPLETE PACKAGE HAS BEEN DECIDED ON - WE CAN SUPPLY POWER DISTRIBUTION, DIMMING AND CONTROL HARDWARE, AS WELL AS GENERATORS.

## GENERATORS



## DISTRIBUTION



## CABLES/RAMPS



one|source ...endless possibilities...



# BEFORE AND AFTER... SEE THE DIFFERENCE

HERE ARE A FEW FIRST HAND EXAMPLES OF HOW LIGHTING CAN CHANGE THE ENVIRONMENT AND CREATE A BIG IMPACT.



Main Ballroom – Wardman Park Marriott, Washington DC.

one|source ...endless possibilities...



# BEFORE AND AFTER... SEE THE DIFFERENCE

HERE ARE A FEW FIRST HAND EXAMPLES OF HOW LIGHTING CAN CHANGE THE ENVIRONMENT AND CREATE A BIG IMPACT.



Old Post Office Building, Washington DC.

**one|source** ...endless possibilities...



# BEFORE AND AFTER... SEE THE DIFFERENCE

HERE ARE A FEW FIRST HAND EXAMPLES OF HOW LIGHTING CAN CHANGE THE ENVIRONMENT AND CREATE A BIG IMPACT.

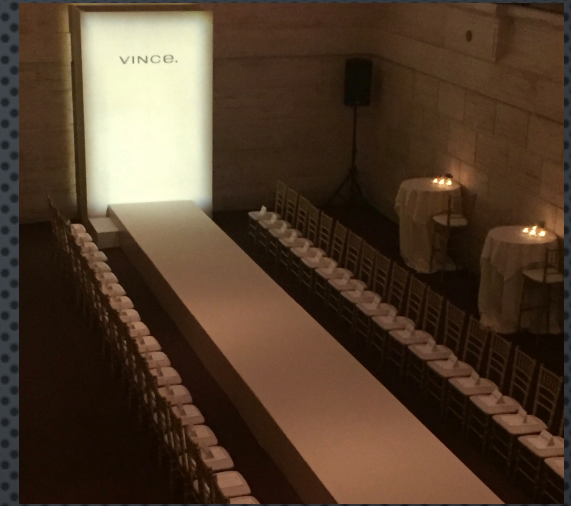


Warehouse Space – Baltimore Maryland.

**one|source** ...endless possibilities...



# Lighting



one|source ...endless possibilities...